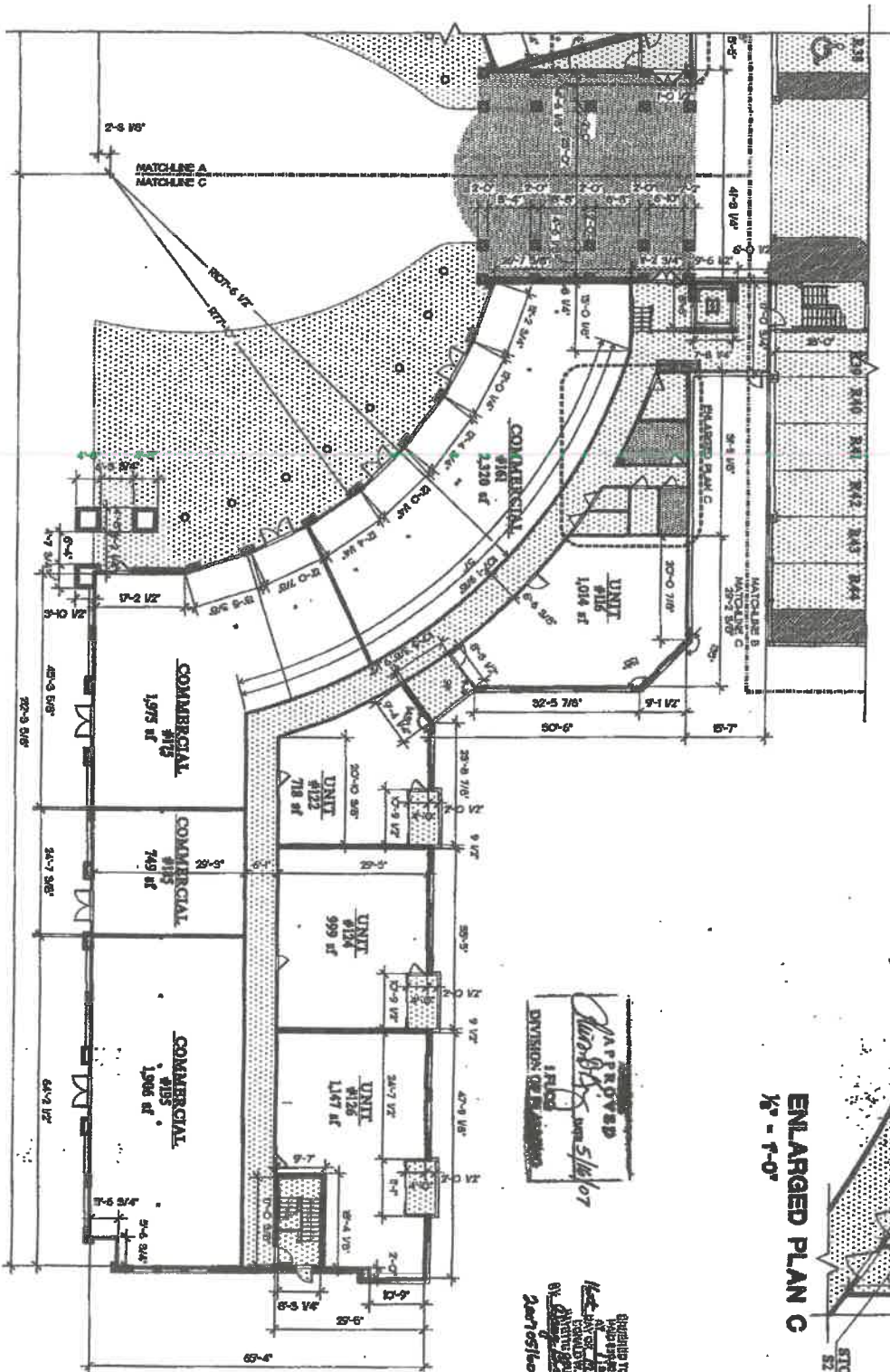


CENTERCOURT CONDOMINIUMS
 Owner: South Hill Group, LLC

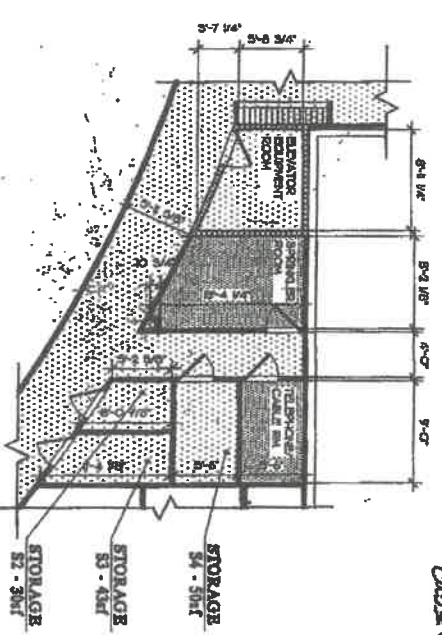
838 SOUTH UPPER STREET
 LEWINGTON, KY.



APPROVED
Division of Building
1 Filed
2/20/10

Specialty to measure
 at 11:30 AM
 on 2/19/10
 by *David F. Furrman*
 2/20/10

ENLARGED PLAN C
 1/8" = 1'-0"



G-837
 Page Side 382



ARCHITECT'S CERTIFICATION FOR CONDOMINIUM PLANS AND PLANS

I, David Furrman, hereby certify that the plans fully and accurately depict the proposed construction, including the number and dimensions of the units as well as the common elements.

David Furrman
 Architect License No. 10000
 State of North Carolina

The drawings, statements and annotations, annexes to and independent bodies are on file at the State of North Carolina, Department of Community Development, Raleigh, NC, on 2/19/10.

Notes: *See notes on plan*
 Date: *2/19/10*
 By: *David Furrman*
 License No. *10000*



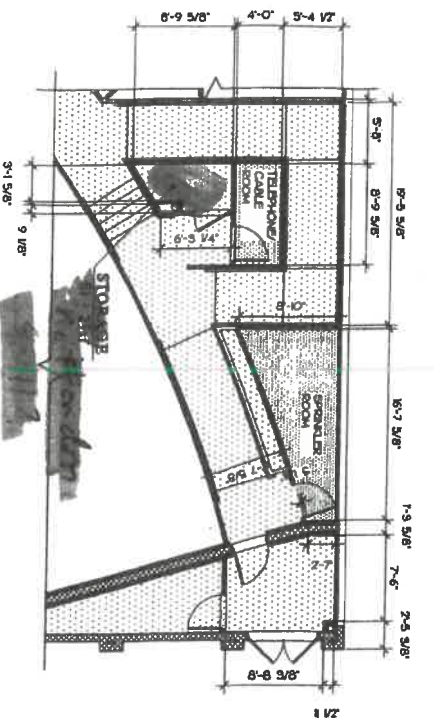
KEY

	SOLID WALL ELEMENTS
	GLASS AND OTHER WALLS
	LIMITED COMMON ELEMENTS
	COMMON ELEMENTS
	CONDOMINIUM UNITS

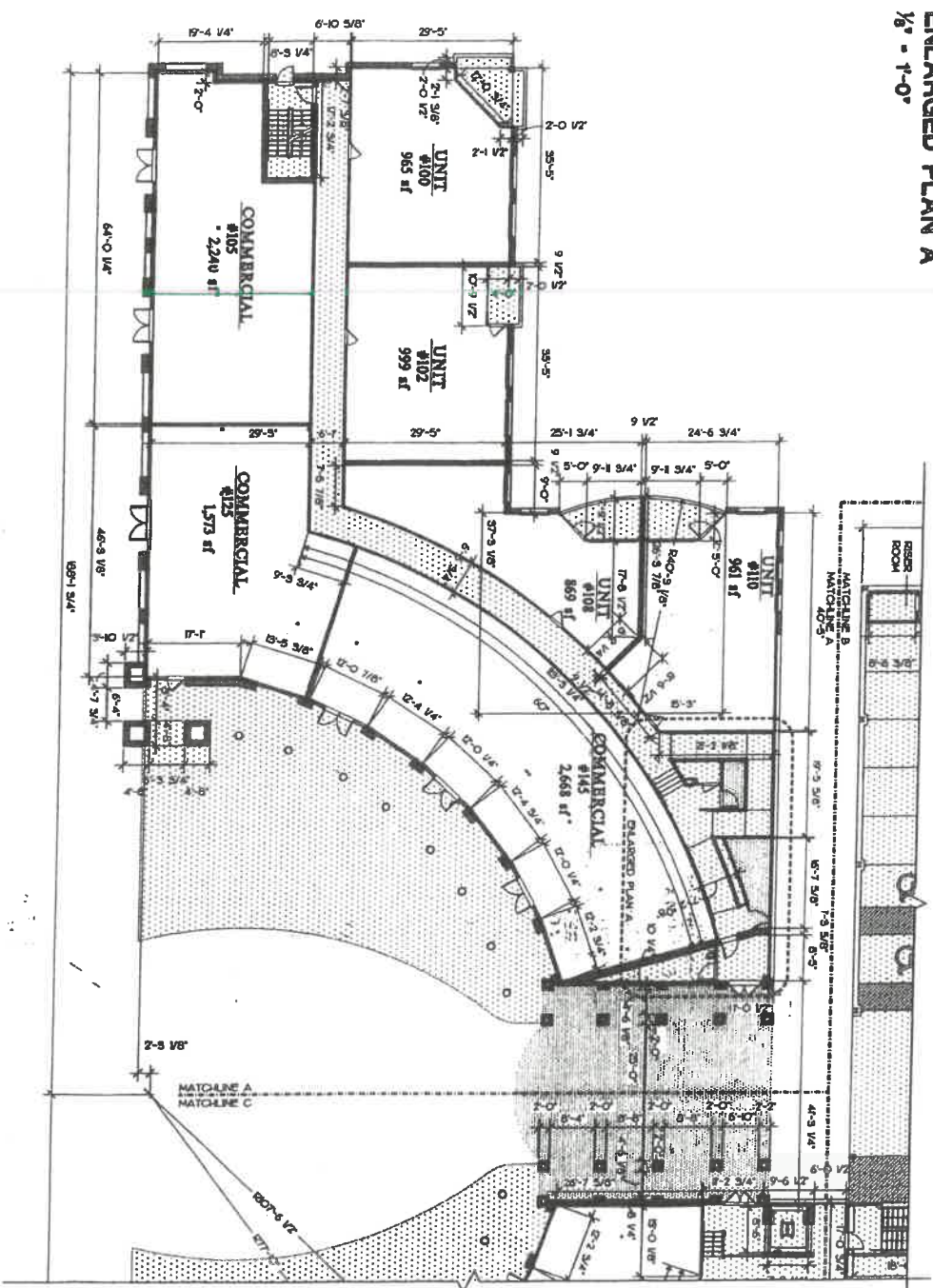
NOTE: ALL AREAS ARE APPROXIMATE

LEVEL 1 SEGMENT C FLOOR PLAN
 1/8" = 1'-0"





ENLARGED PLAN A
1/8" = 1'-0"



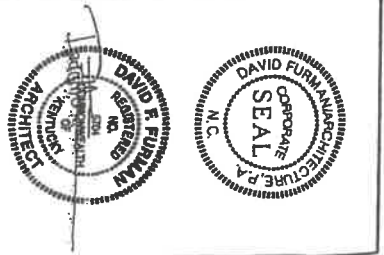
APPROVED
Cheryl S. Staylor
UNIVERSITY OF TEXAS AT AUSTIN
DIVISION OF EXAMINING

ORIGINAL TO RECORD
PAID \$240 N.C. TAX
RECEIVED BY
DATE
BY
20070510k019

G-836
PAGE SIDE 836

CENTERCOURT CONDOMINIUMS
Owner: South Hill Group, LLC

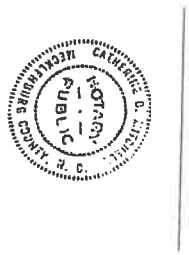
636 SOUTH UPPER STREET
LEXINGTON, KY.



ARCHITECTS
CERTIFICATION FOR
CONDOMINIUM PLATS
AND PLANS

I, David Fulmer, hereby certify that the plans fully and accurately depict the layout, location, unit numbers and dimensions of the units as built.

The foregoing instrument was subscribed, sworn to and acknowledged before me on this 11th day of May, 2007.
Notary Public: *Carlisle & Mitchell*
My Commission Expires: 12-31-11



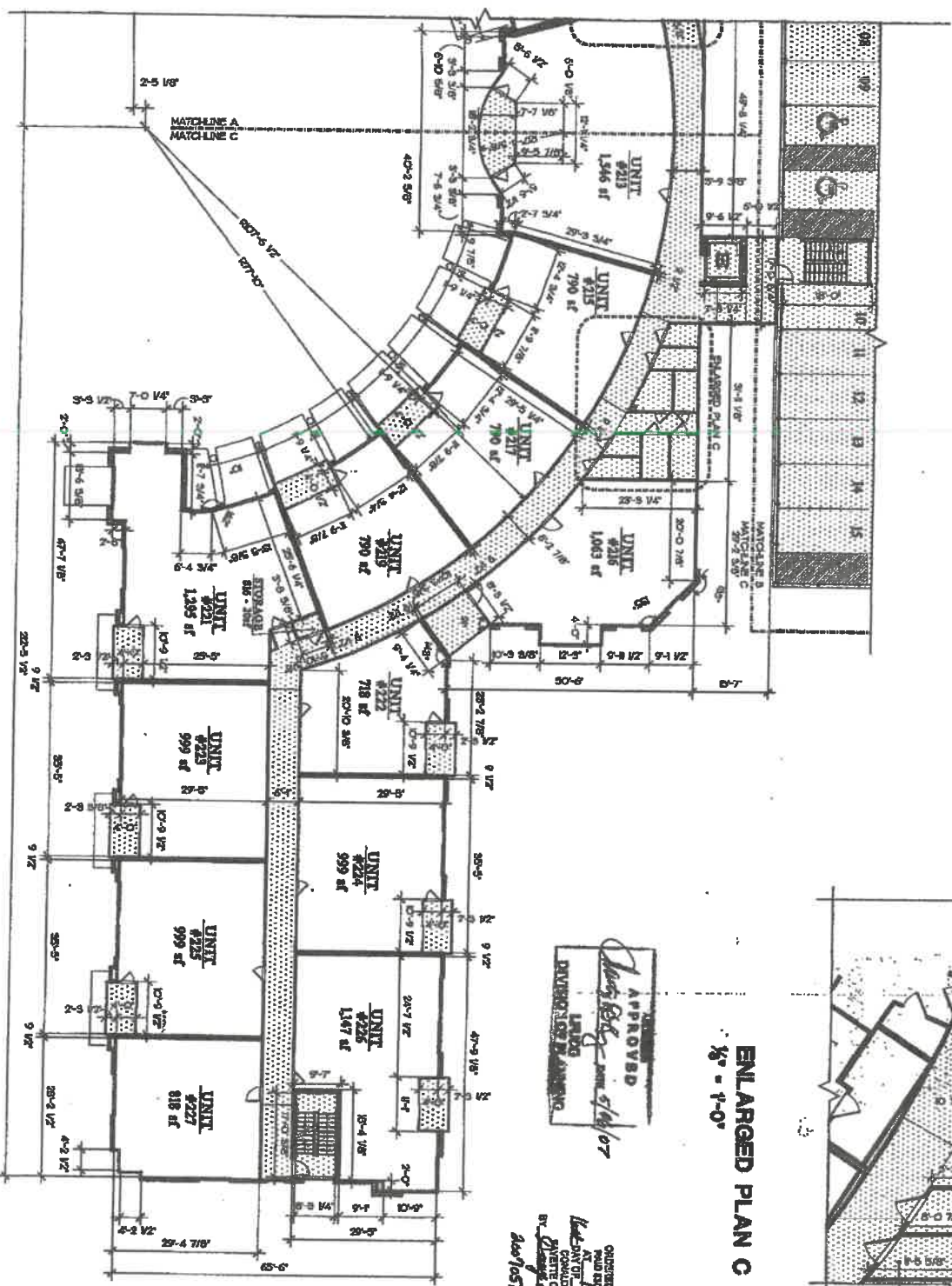
KEY

	CORE WALLS
	COMMON ELEMENTS
	LIMITED COMMON ELEMENTS
	COMMON ELEMENTS
	CONDOMINIUM UNITS

NOTE: ALL AREAS ARE APPROXIMATE

LEVEL 1
SEGMENT A
FLOOR PLAN
1/16" = 1'-0"
D1.0

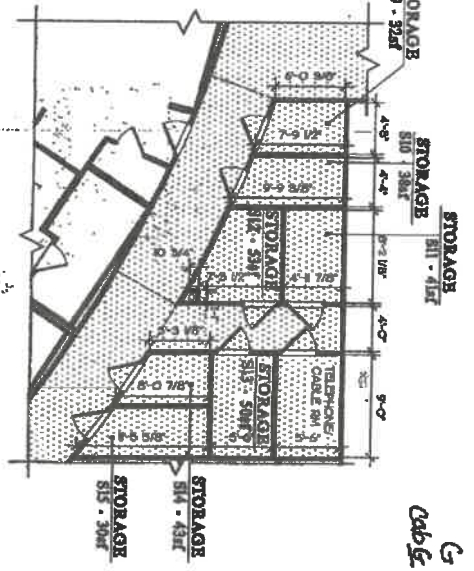
CENTERCOURT CONDOMINIUMS
 Owner: South Hill Group, LLC



David R. Furrman
 ARCHITECT
 APPROVED
 5/16/07

ORDER TO RECORD
 AT 11:00 AM
 MAY 16, 2007
 COUNTY OF MIDDLESEX
 BY *David R. Furrman*
 ARCHITECT

ENLARGED PLAN C
 1/8" = 1'-0"



G-839
 Cab G slide 89

635 SOUTH UPPER STREET
 LEXINGTON, KY.

LEVEL 2
SEGMENT C
FLOOR PLAN
 1/8" = 1'-0"

KEY

- CONCRETE
- WALLS COMMON ELEMENTS
- UNITED COMMON ELEMENTS
- COMMON ELEMENTS
- CONDOMINIUM UNITS

NOTE: ALL DIMS ARE APPROXIMATE

ARCHITECT'S CERTIFICATION FOR CONDOMINIUM PLANS AND PLANS

I, David Furrman, hereby certify that the plans fully and accurately depict the layout, location, and construction and dimensions of the work to be built.

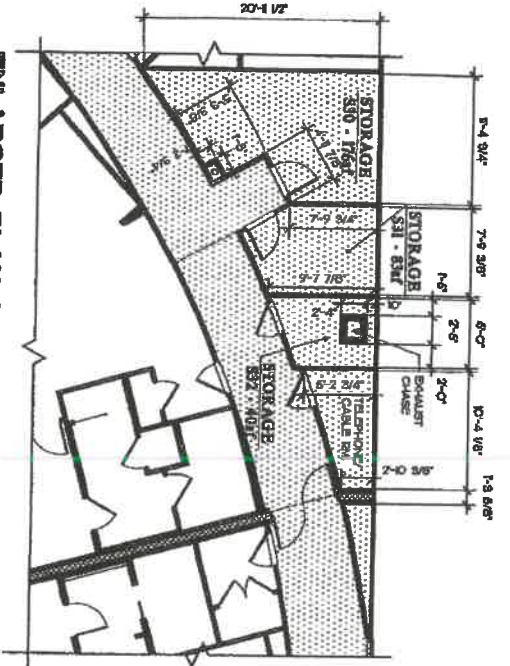
David R. Furrman
 ARCHITECT

5/16/07

NOTARY PUBLIC
 CATHARINE B. TITMEL
 REGISTERED COMMERCIAL

DAVID FURMAN ARCHITECTURE, P.A.
 ARCHITECTS
 100 SOUTH MAIN STREET
 SUITE 200
 LEXINGTON, KY 40502
 (606) 253-1111

DAVID FURMAN ARCHITECTURE, P.A.
 ARCHITECTS
 100 SOUTH MAIN STREET
 SUITE 200
 LEXINGTON, KY 40502
 (606) 253-1111



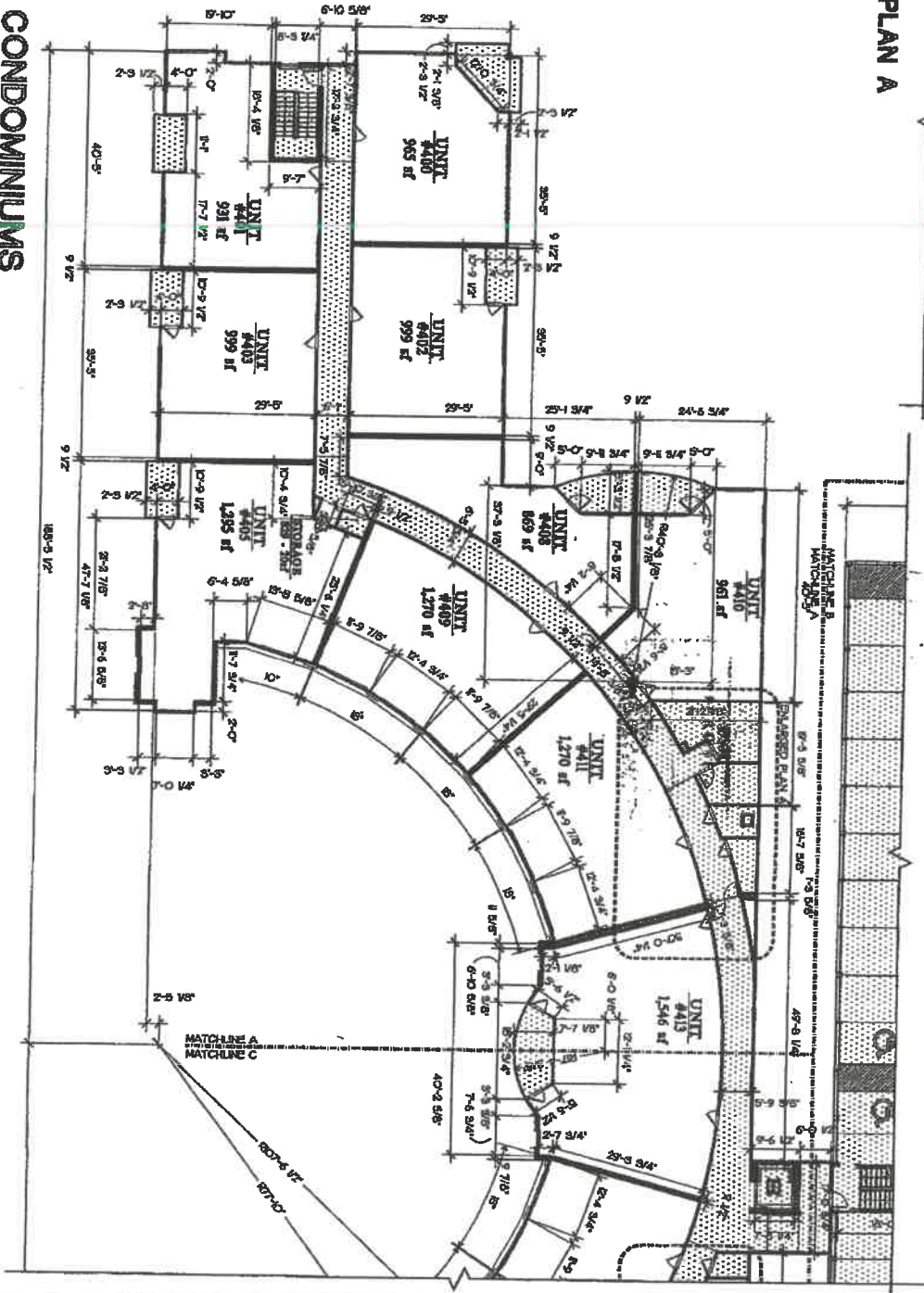
ENLARGED PLAN A
1/8" = 1'-0"

APPROVED
David R. Furlan
DAVID R. FURLAN
ARCHITECT
DIVISION OF PLANNING

ORDERED TO RECORD
PAID \$250.00 N.C. TAX
RECORDING FEE
BY *Sherry L. Williams*
2/27/05 10:17 AM



Coble slide 814



CENTERCOURT CONDOMINIUMS
Owner, South Hill Group, LLC

585 SOUTH UPPER STREET
LEXINGTON, KY.

KEY

- BALCONY
- COMMON ELEMENTS
- WALLS, STAIRS, WALLS, COMMON ELEMENTS
- UNITED COMMON ELEMENTS
- COMMON ELEMENTS
- CONDOMINIUM UNITS

NOTE: ALL AREAS ARE APPROXIMATE

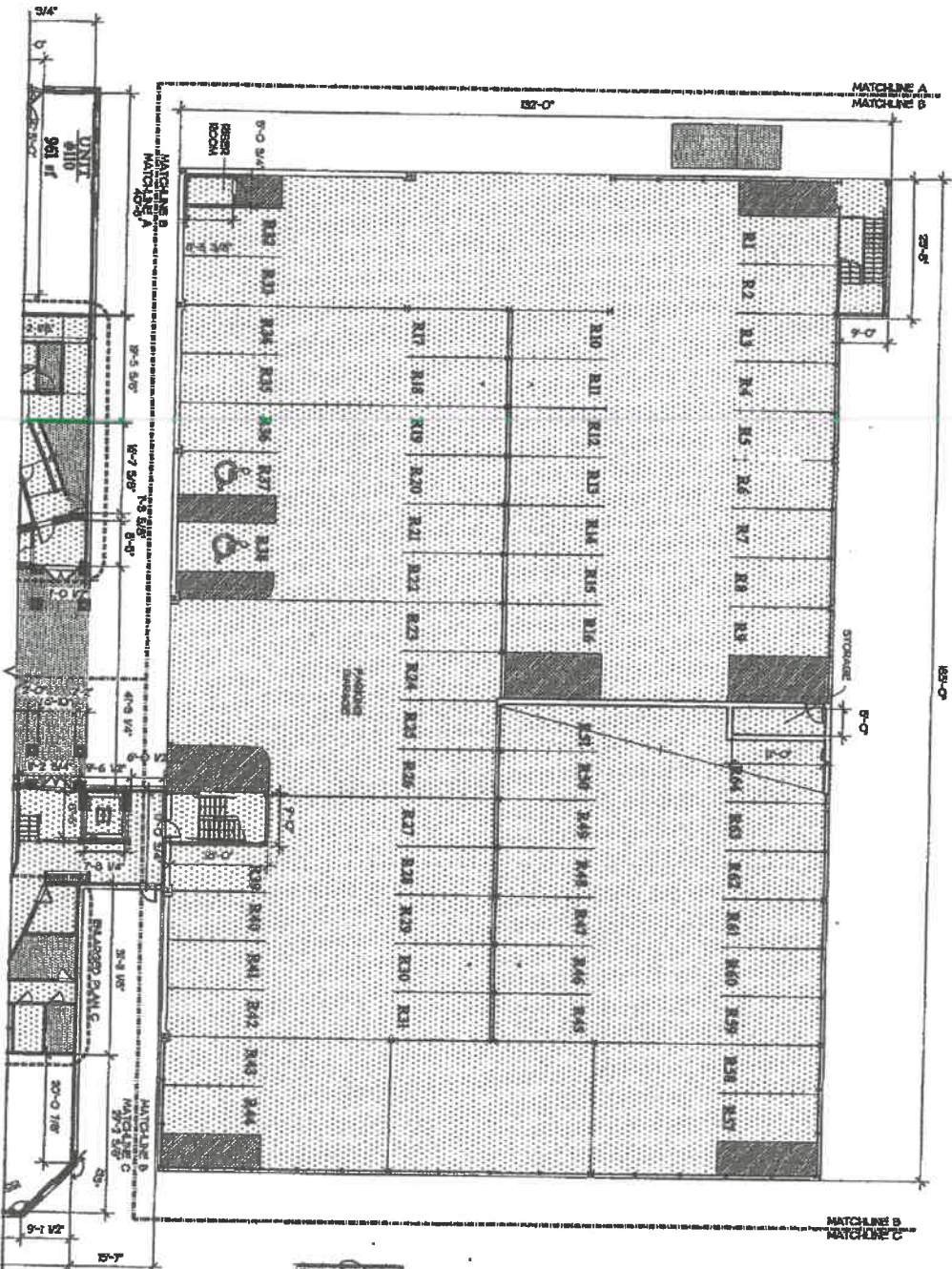
LEVEL 4
SEGMENT A
FLOOR PLAN
1/16" = 1'-0"

D10.0

ARCHITECTS
CERTIFICATION FOR
CONDOMINIUM PLANS
AND PLANS

I, David R. Furlan, hereby certify that the plans fully and accurately depict the construction and dimensions of the units in this Condominium Building.
Date of Issue: 2/27/05
My Commission Expires: 12-31-11





APPROVED
David Furman
 5/16/07



ARCHITECT'S CERTIFICATION FOR CONDOMINIUM PLANS AND PLANS

I, David Furman, hereby certify that I am a duly and lawfully registered architect in the State of North Carolina and that I am the author of the plans and specifications of the units as built.
 My Commission Expires: 12-31-11
 Date: 5/16/07

KEY

- GALL WALLS COMMON ELEMENTS
- RESERVATION WALLS COMMON ELEMENTS
- UNITS COMMON ELEMENTS
- COMMON ELEMENTS
- CONDOMINIUM UNITS

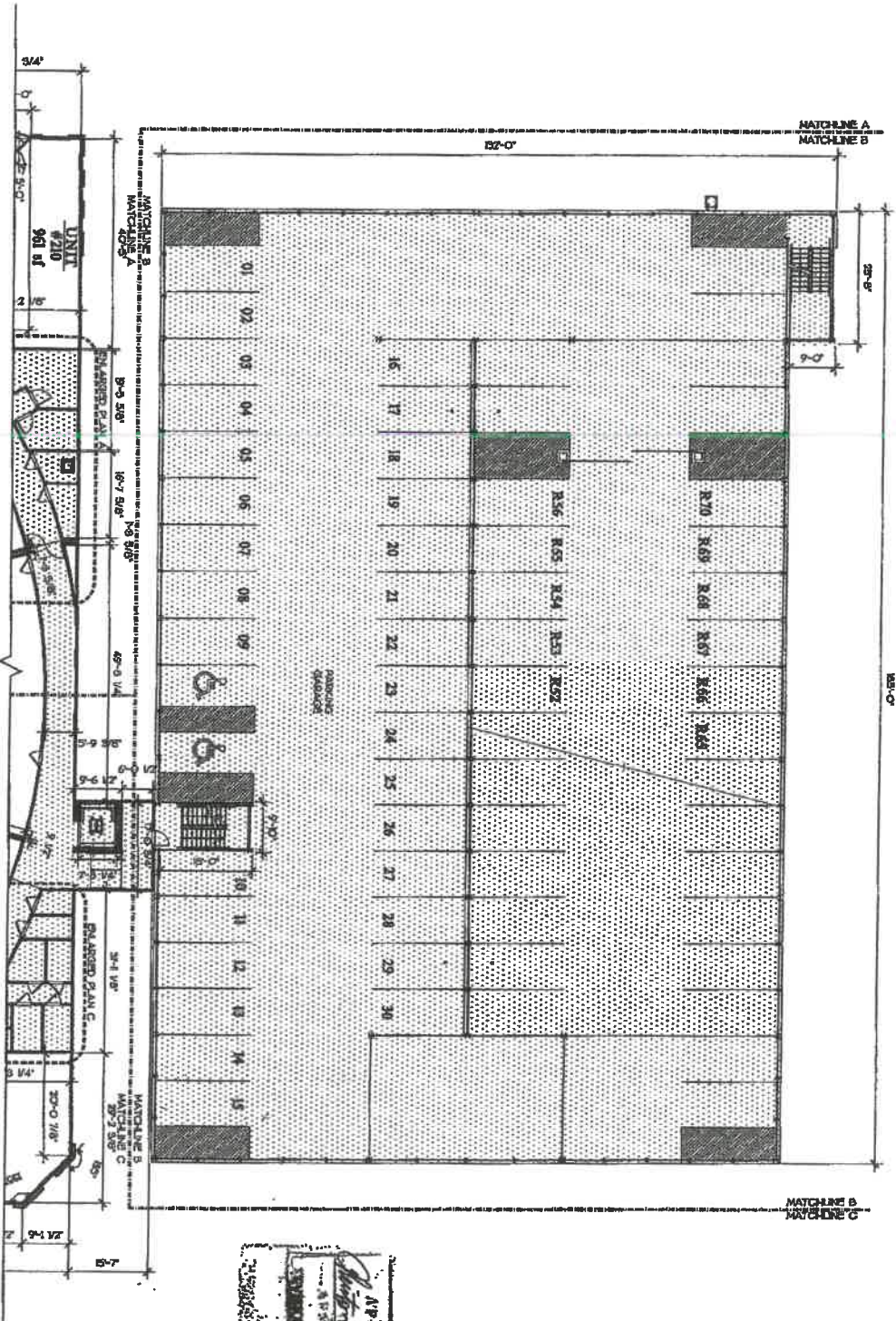
NOTE: ALL AREAS ARE APPROXIMATE

**LEVEL 1
 SEGMENT B
 FLOOR PLAN
 1/16" = 1'-0"**

D2.0

ORIGINATED BY: [Name]
 DRAWN BY: [Name]
 CHECKED BY: [Name]
 DATE: 5/16/07
 636 SOUTH UPPIN STREET
 LEWISTON, KY.

Cable Slide 8/14



APPROVED
 5/14/07
 ARCHITECT

CENTERCOURT CONDOMINIUMS
 Owner: South Hill Group, LLC

DESIGNED BY
 ARCHITECT
 684 SOUTH UPPER STREET
 LEXINGTON, KY.

LEVEL 2
SEGMENT B
FLOOR PLAN
 1/16" = 1'-0"
D5.C

KEY

- CHAD WALLS (COMMON ELEMENTS)
- ROCK VENEER WALLS (COMMON ELEMENTS)
- WALLS (COMMON ELEMENTS)
- LIMITED COMMON ELEMENTS
- COMMON ELEMENTS
- CONDOMINIUM UNITS

NOTE: ALL AREAS ARE APPROXIMATE

ARCHITECT'S CERTIFICATION FOR CONDOMINIUM PLATS AND PLANS

I, David Furman, hereby certify that the plans fully and accurately depict the layout, location, unit numbers and dimensions of the units as built.

David Furman
 Architect
 License No. 10000

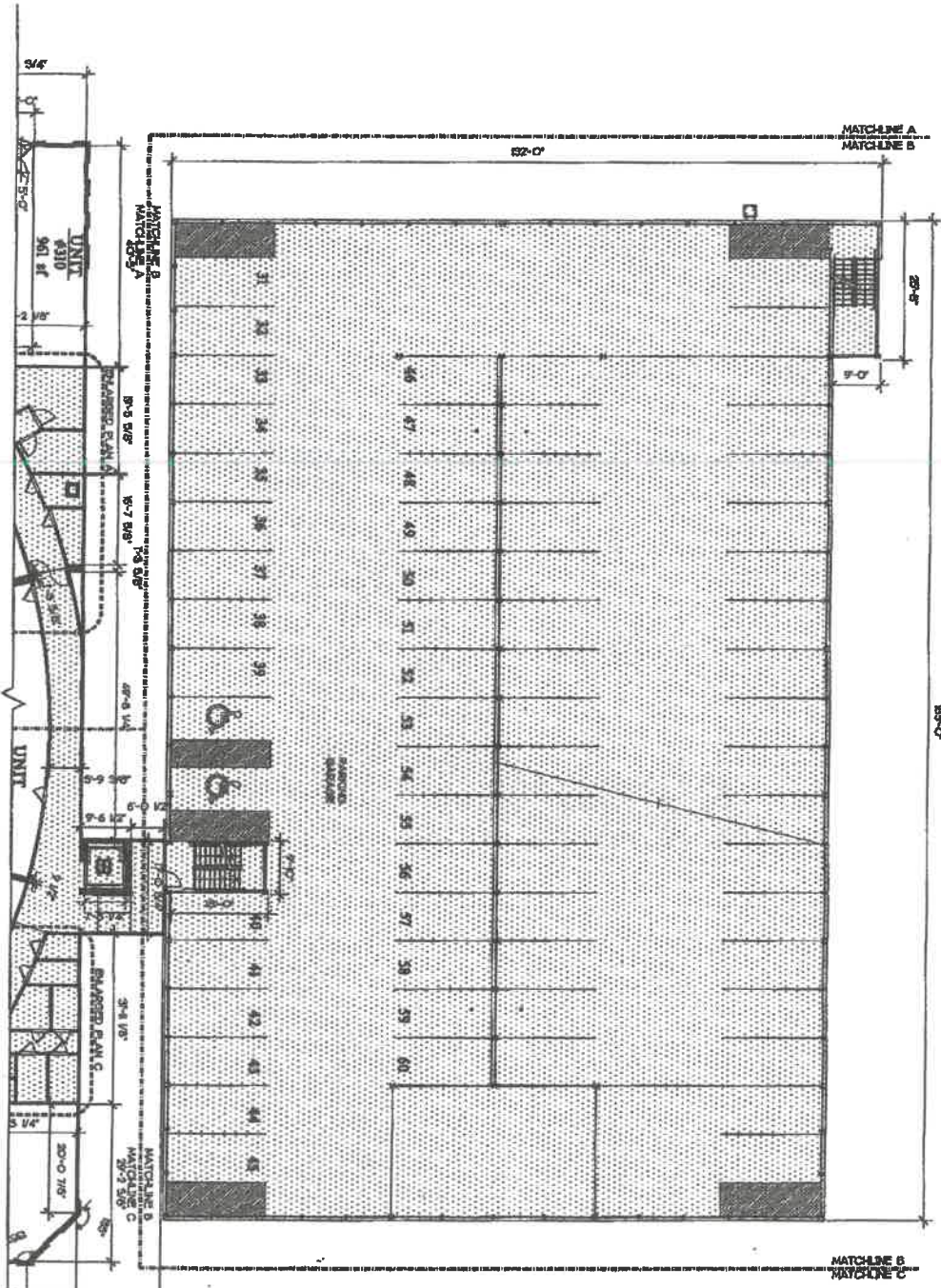
The foregoing statement was prepared, sworn to and signed by me on this 14th day of May, 2007.
 My Commission Expires 12-31-11

DAVID FURMAN ARCHITECTURE, P.A.
 10000 ARCHITECT

DAVID FURMAN ARCHITECTURE, P.A.
 CORPORATE SEAL
 N.C.

DAVID R. FURMAN
 ARCHITECT
 N.C.

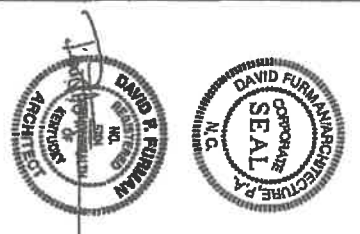
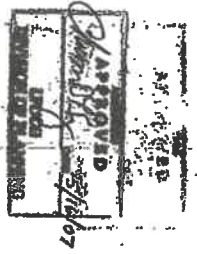
Cab. G. side 245



CENTERCOURT CONDOMINIUMS
 Owner: South Hill Group, LLC

ENGINEER TO RECORD
 1500 BELLEVUE BLVD
 SUITE 1000
 CHARLOTTE, NC 28202
 704.375.1234
 2010100178

888 SOUTH UPPER STREET
 LEWINGTON, KY



**ARCHITECT'S
 CERTIFICATION FOR
 CONDOMINIUM PLANS
 AND PLANS**

I, David Furlan, hereby certify that the plans fully comply with the requirements of the State of North Carolina and the provisions of the State of North Carolina.

The foregoing statement was subscribed, signed to and attested before me on this 9th day of May, 2017 at Lexington, Kentucky by David F. Furlan, a Notary Public in and for the State of North Carolina.

KEY

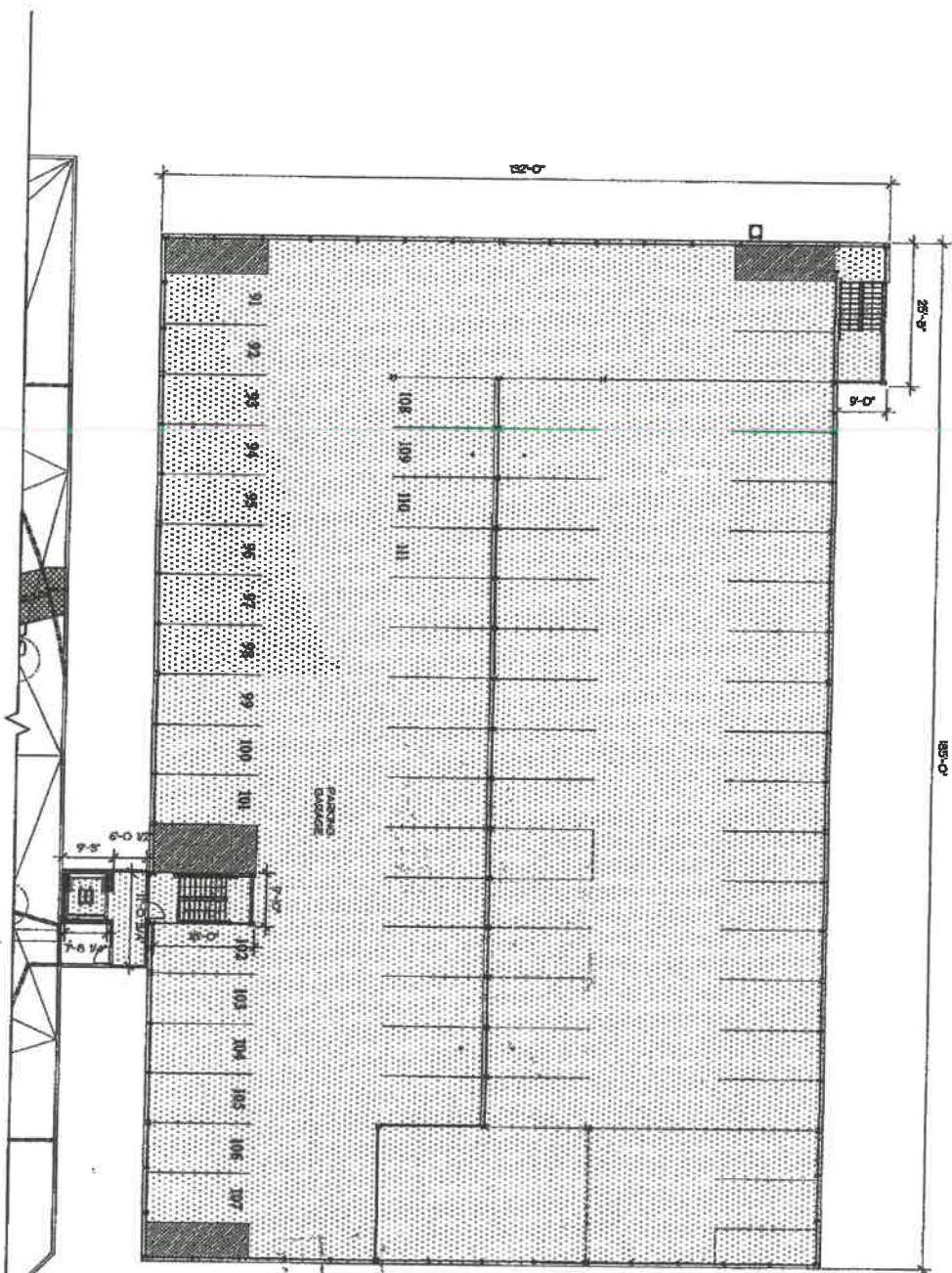
- GYM WALL ELEMENTS
- RESIDENT WALLS ELEMENTS
- WALLS COMMON ELEMENTS
- LIMITED COMMON ELEMENTS
- COMMON ELEMENTS
- CONDOMINIUM UNITS

NOTE: ALL AREAS ARE APPROXIMATE

**LEVEL 3
 SEGMENT B
 FLOOR PLAN**
 1/16" = 1'-0"

D8.0

Cap E slide 247



APR 11 2007
 DIVISION OF PLANNING
 LINTON



ARCHITECTS
 CERTIFICATION FOR
 CONDOMINIUM FLATS
 AND PLANS

I, David Furman, hereby certify that the plans fully and accurately depict the true and correct number and dimensions of the units as built.

David Furman
 Licensed Architect, License No. 15749

The foregoing instrument was submitted, presented and acknowledged before me on this 11th day of April, 2007
 Notary Public, Catherine B. Dittell
 My Commission Expires 12-31-11

KEY

- SOLID WALL ELEMENT
- BLOCK MASONRY WALL ELEMENT
- LIMITED COMMON ELEMENT
- COMMON ELEMENT
- CONDOMINIUM UNIT

NOTE: ALL AREAS ARE APPROXIMATE

LEVEL 5
 GARAGE
 FLOOR PLAN
 1/8" = 1'-0"

D13.0

CENTERCOURT CONDOMINIUMS
 Owner: South Hill Group, LLC

636 SOUTH UPPER STREET
 LEXINGTON, KY

Utilities to be added
 1/2" = 1'-0" (SEE PLAN)
 1/8" = 1'-0" (SEE PLAN)
 1/4" = 1'-0" (SEE PLAN)
 1/2" = 1'-0" (SEE PLAN)
 3/4" = 1'-0" (SEE PLAN)
 1" = 1'-0" (SEE PLAN)
 1 1/2" = 1'-0" (SEE PLAN)
 2" = 1'-0" (SEE PLAN)
 3" = 1'-0" (SEE PLAN)
 4" = 1'-0" (SEE PLAN)
 6" = 1'-0" (SEE PLAN)
 8" = 1'-0" (SEE PLAN)
 12" = 1'-0" (SEE PLAN)
 18" = 1'-0" (SEE PLAN)
 24" = 1'-0" (SEE PLAN)